

## Troglotech T800 Auto-Uprighting Camera

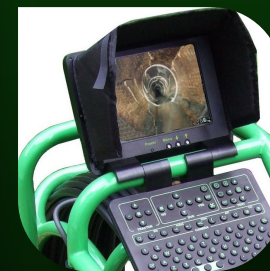
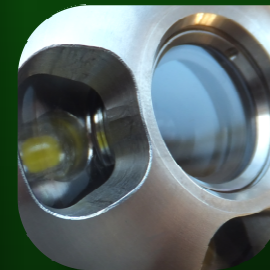
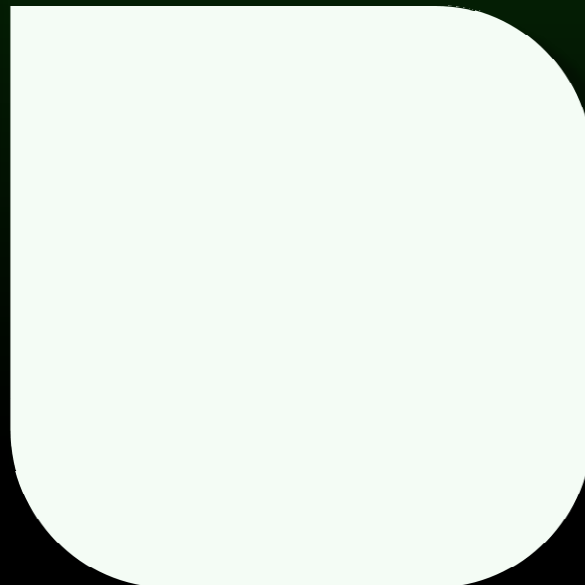
A camera on a push-rod system has a hard life, even when protected by a skid set. It is inevitable that the camera is going to be bouncing off displaced-joints and coming across solid debris. At Troglotech we have been designing cameras for over thirty years and we know how to build a reliable camera that is going to provide the robustness needed in our profession. We also know how to produce a camera with the sharpest, noise-free picture that faithfully reproduces the scene.

There are thousands of Troglotech T800 cameras in use every day throughout the world, in the harshest environments. This is the standard camera fitted to our Trogloprobe push-rod system, it is also employed as a replacement camera on other systems.

As with all our cameras, the T800 is machined from high-grade stainless steel and the rotating parts are mounted on precision bearings to ensure a long service life. The internal mechanism is isolated from the outer body with the use of Nitrile shock-absorbers. The camera is fitted with a heavy-duty 300-grade stainless steel guard to survive the knocks that are inevitable, the window for the lens is 5mm-thick sapphire.

At a maximum diameter of 48mm, the T800 can survey 3" (75mm) pipes to 6" (150mm) when fitted to our standard brush skid set. We can supply an adjustable skid for use in 6" (150mm) to 12" (300mm) pipes. The custom LED lighting can illuminate up to ~36" (~1000mm) dependant on material.

More information at:  
[www.troglotech.com](http://www.troglotech.com)  
[info@troglotech.com](mailto:info@troglotech.com)



# The T800 Auto-Uprighting Camera

The T800 Auto-Uprighting camera - tough - reliable - proven



troglotech

*ultimate underground technology*

## Features and benefits

- **Fits the T804 Troglprobe System**
- Simple to use - auto uprighting and fixed focus, nothing to adjust
- Fully waterproof to IP68 (160 psi)
- Thousands in use throughout the world in the harshest environments
- Designed for simple servicing at our world-wide service centres
- Low-power operation - allows up-to 8 hours operation on the Troglotech T804 system
- Tough - Stainless-Steel construction with a 5mm deep Sapphire lens window
- Fits standard Troglotech skid sets
- Well proven camera design
- Super-bright custom LED lighting
- Patented 'Digital Clarity' technology for a sharp, noise-free video picture
- High Definition, 540 lines pph digital sensor module designed by Troglotech
- Fixed white-balance for correct colour rendition - no more green terracotta pipes!



## what we do

### troglotech ltd

We are a fast-growing but well established company. We manufacture the T804 Troglprobe, the rugged and fully portable inspection system that includes everything for reliable inspection of pipelines. The system is battery operated and includes a digital video recorder, text-writer, rod-counter and high brightness display.

The camera supplied with the Troglprobe is the T800 forward-view auto-uprighting model with thousands in use throughout the world.

Our T812 Pan and Tilt camera is the worlds first to include 'Human Perspective View'

If small-bore pipework needs inspecting, our one-inch T710 camera fits the bill

